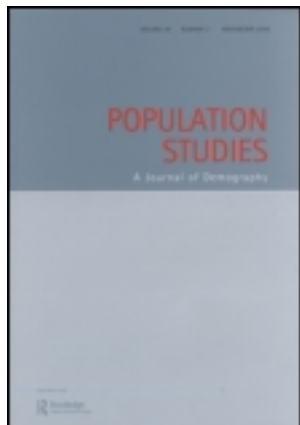


This article was downloaded by: [67.202.255.38]

On: 27 June 2012, At: 08:57

Publisher: Routledge

Informa Ltd Registered in England and Wales Registered Number: 1072954 Registered office: Mortimer House, 37-41 Mortimer Street, London W1T 3JH, UK



Population Studies: A Journal of Demography

Publication details, including instructions for authors and subscription information:

<http://www.tandfonline.com/loi/rpst20>

Corrigendum

Version of record first published: 29 May 2012

To cite this article: (2012): Corrigendum, Population Studies: A Journal of Demography, 66:2, 219-221

To link to this article: <http://dx.doi.org/10.1080/00324728.2012.680695>

PLEASE SCROLL DOWN FOR ARTICLE

Full terms and conditions of use: <http://www.tandfonline.com/page/terms-and-conditions>

This article may be used for research, teaching, and private study purposes. Any substantial or systematic reproduction, redistribution, reselling, loan, sub-licensing, systematic supply, or distribution in any form to anyone is expressly forbidden.

The publisher does not give any warranty express or implied or make any representation that the contents will be complete or accurate or up to date. The accuracy of any instructions, formulae, and drug doses should be independently verified with primary sources. The publisher shall not be liable for any loss, actions, claims, proceedings, demand, or costs or damages whatsoever or howsoever caused arising directly or indirectly in connection with or arising out of the use of this material.

Corrigendum

Wilmoth, John et al. 2012. A flexible two-dimensional mortality model for use in indirect estimation, *Population Studies* 66(1): 1-28 (DOI: 10.1080/00324728.2011.611411).

During the processing of this paper, errors occurred in the reproduction of three of the authors' graphs. In Figure 4, the plotted curves from the middle two panels were used also for the bottom panels. In the bottom row of Figure 7, the data points for females appeared in both graphs. Finally, in the two top panels of Figure 9 (for England and Wales), the titles were interchanged and the wrong data were used. Please use these corrected versions of Figures 4, 7, and 9.

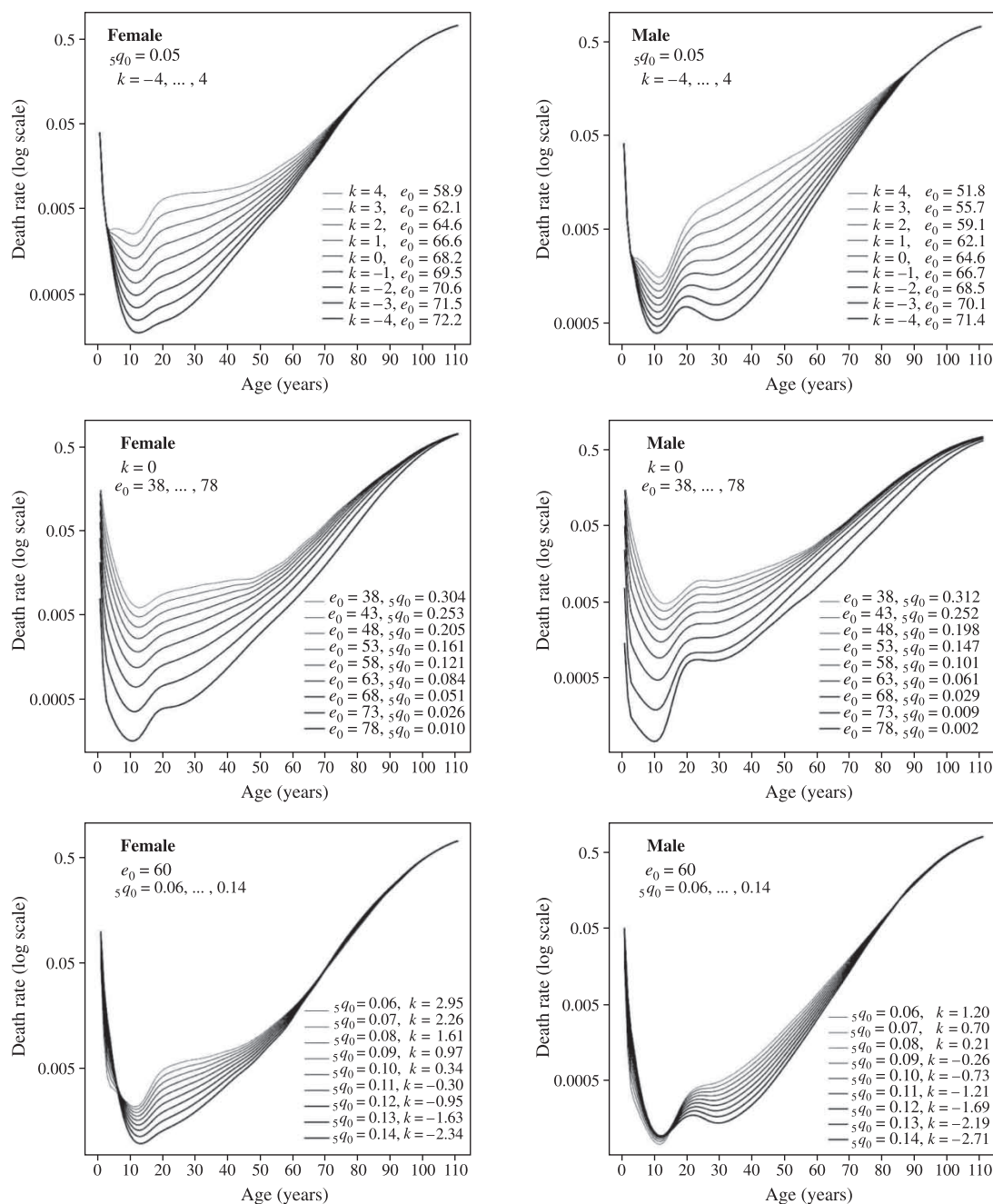


Figure 4 Sex-specific age patterns of mortality implied by three selected pairs of input parameters: top panels are based on s_q0 and k , middle panels on k and e_0 , bottom panels on e_0 and s_q0

Note: For the pair of input variables in each panel, one value is fixed and the other is variable.

Source: Data as summarized in Table 1(a).

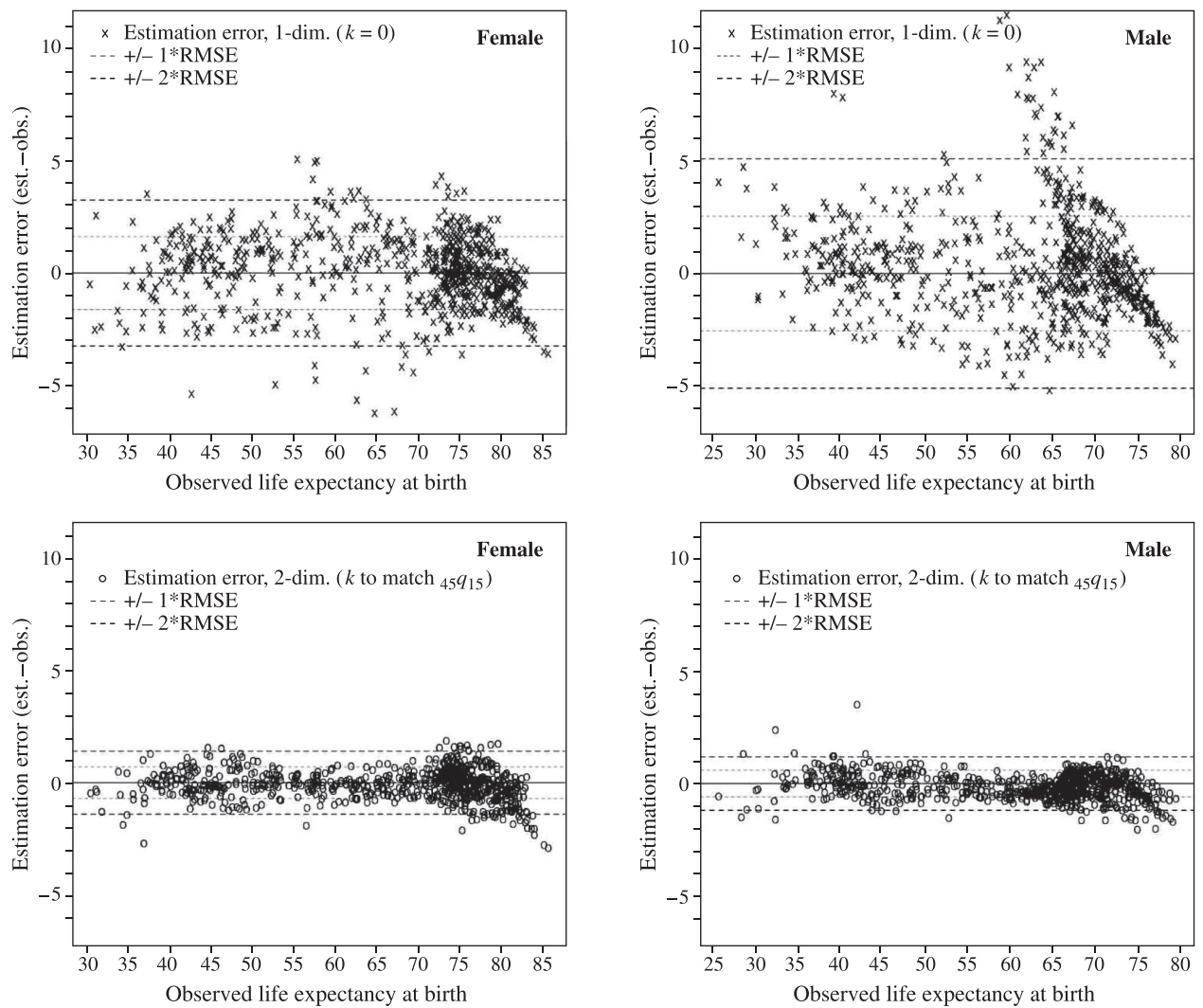


Figure 7 Estimation errors of log-quadratic model for life expectancy at birth by sex, with error bands of ± 1 or 2 root-mean-squared errors (RMSEs): top panels are for one-dimensional model ($k = 0$), bottom panels are for two-dimensional model (k to match $_{45}q_{15}$), HMD data ($n = 719$)

Source: Data as summarized in Table 1(a).

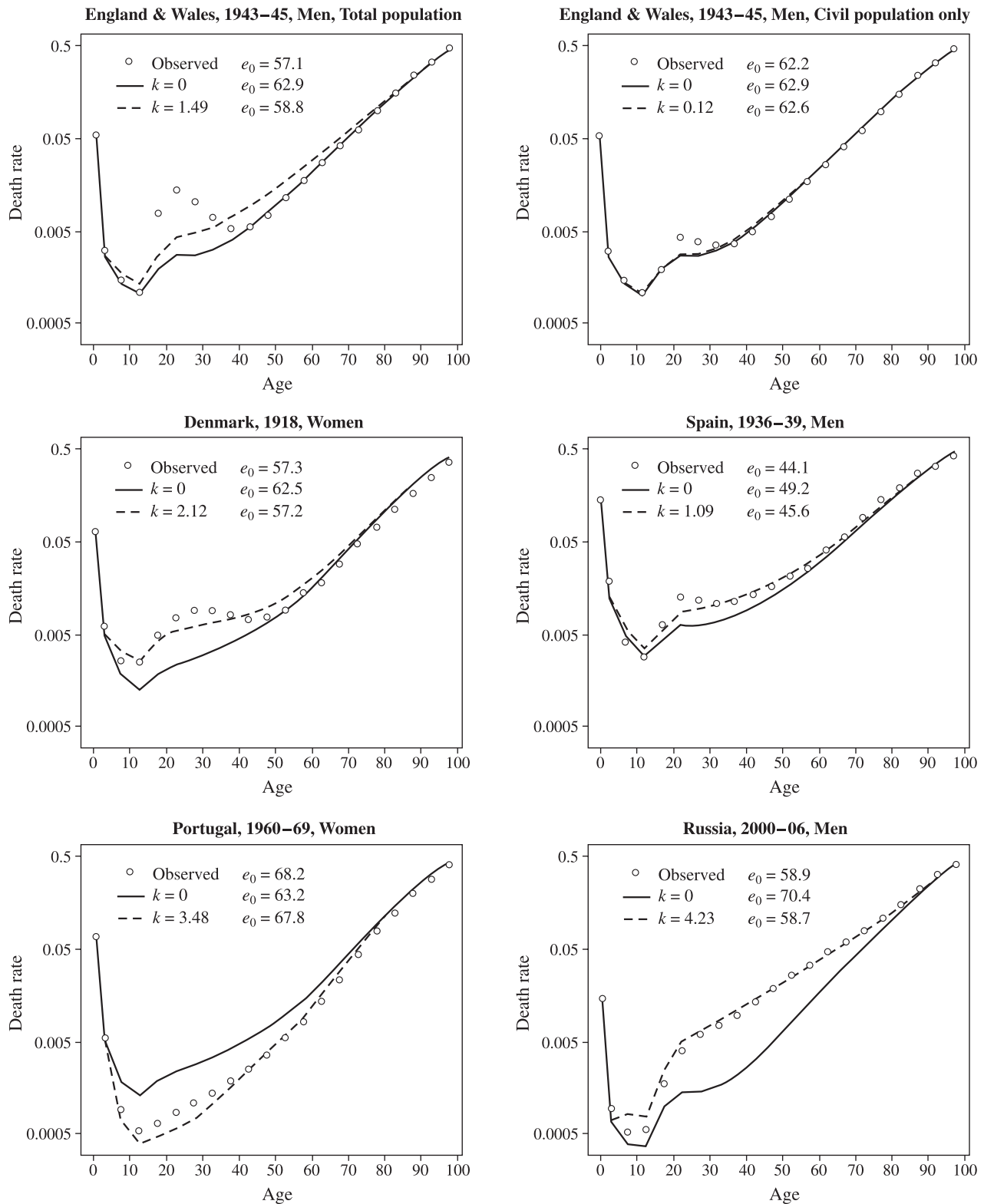


Figure 9 Six examples of historical mortality curves from HMD data, with predictions derived using the log-quadratic model: given ${}_5q_0$ only (solid line), or given both ${}_5q_0$ and ${}_{45}q_{15}$ (dashed line)
Source: Data as summarized in Table 1(a).